



SANSIN CARE ENROLLMENT IMAGERY REFERENCE GUIDE

To produce a Sansin Care report we need a sufficient number of images that show the entire structure, maintenance/troublesome areas, and any end grain images that apply to the project. Sansin Care also requires images from each exposure - North, South, East and West. All images should be taken in a wide shot image and then the same area with a close-up image.

It is recommended to provide images specified above in context to the building location, overall design and landscape setting (next to water, tree line, etc.). If you have any questions, contact your Sansin Care representative.

Note: File names of the images need to be named correctly before submission (i.e. Close Up - Walk Way - Project Name - Date.JPG).

Wide Shot Images



Entire Structure



Exposed Facing Side

Close-Up Images



Entire Structure

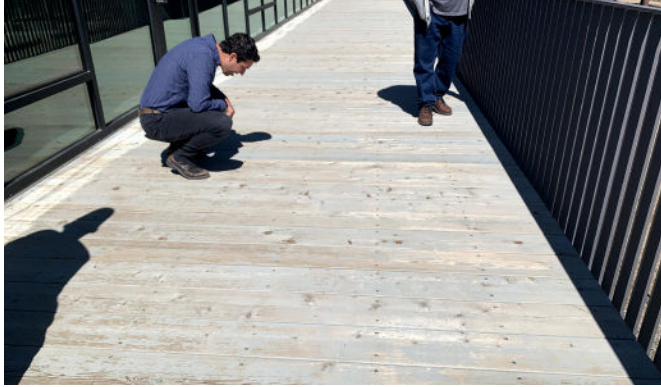


Exposed Facing Side

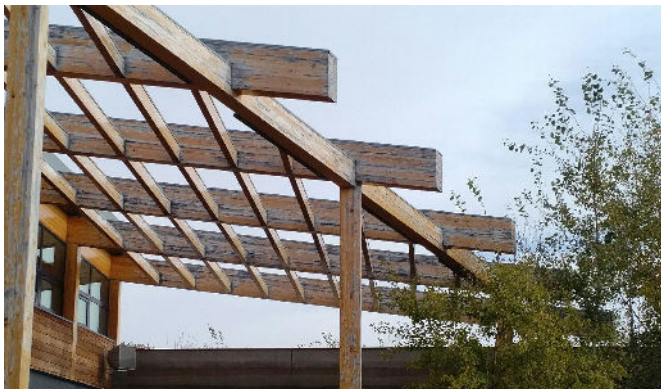


SANSIN CARE ENROLLMENT IMAGERY REFERENCE GUIDE

Wide Shot Images



Walkway



End Grain



Maintenance Area

Close-Up Images



Walkway



End Grain



Maintenance Area